



## **CROWN HOUSE**

WALTON ON THE HILL

[www.michael-everett.co.uk](http://www.michael-everett.co.uk)



# 6 CROWN HOUSE

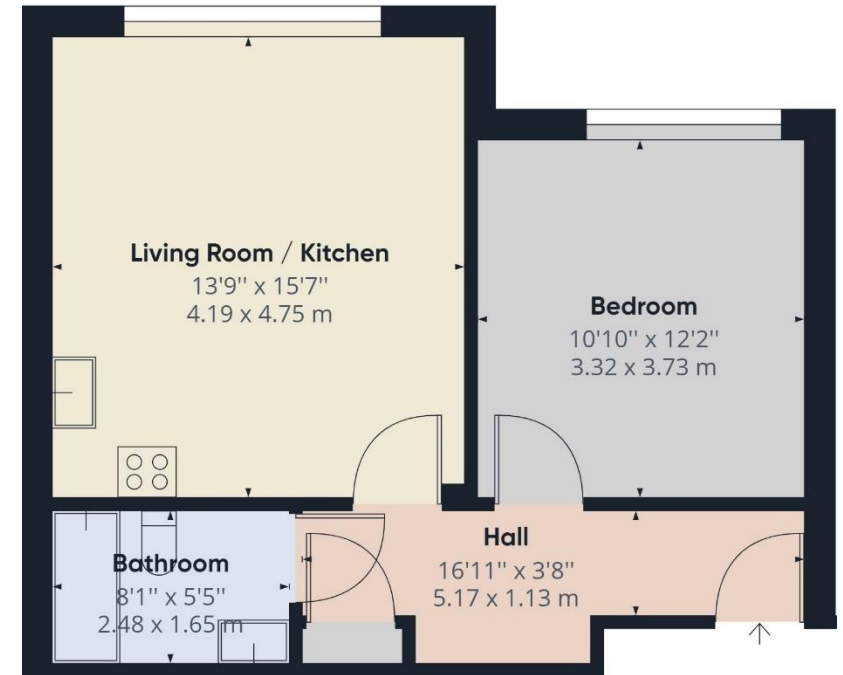
CHEQUERS LANE, WALTON ON THE HILL, KT20 7RR

This beautifully presented first floor apartment of 467 sq ft is located within a select 2015 built development. This fine apartment has a broad appeal and would suit first time buyers, the trade down retired or an investor.

The smart communal hall benefits from a lift and stairs with a glass balustrade leading to the first floor. A private hallway leads to a contemporary open plan reception room and kitchen with integrated appliances. There is one good sized bedroom and luxury bathroom.

Outside there are well maintained grounds and an allocated parking space.

The flat is located in the heart of the village centre offering a range of shops, services and renowned pubs & restaurants.



ASKING PRICE: **£290,000**



**WALTON ON THE HILL** 61 Walton Street, Walton-on-the-Hill, Surrey KT20 7RZ  
**01737 814877**

